



CRAFTING VISIONARY LUXURY ON PALM JUMEIRAH

ABOUT THE COMPANY

Gulf House Real Estate Development stands at the forefront of luxury living, dedicated to creating iconic residences that challenge architectural conventions and redefine the meaning of elegance. With a commitment to bespoke design, our developments are curated for discerning individuals seeking homes that reflect their personal taste, lifestyle, and aspirations.

Our philosophy is simple yet powerful: true luxury is not mass-produced—it is tailor-made. We work hand-in-hand with globally renowned architects, interior designers, and artisans to shape residences that offer both aesthetic brilliance and functional perfection

FLAGSHIP PROJECT



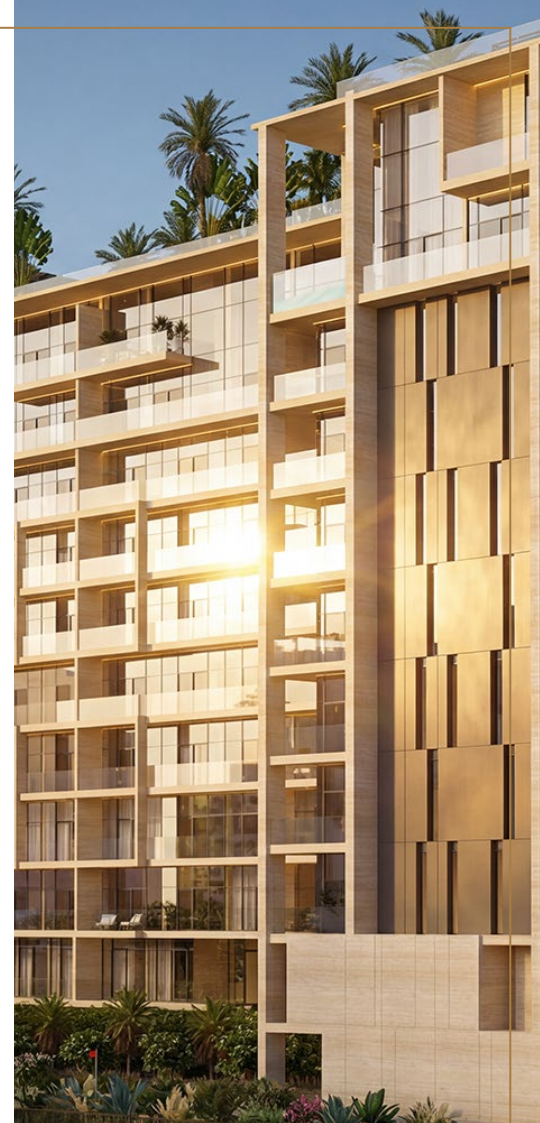
Located on Palm Jumeirah—Dubai's most prestigious address—Olaia Residences is a showcase of our passion for exclusivity, innovation, and architectural mastery. Featuring limited-edition duplexes and residences with panoramic views, premium amenities, and refined interiors, Olaia is not just a home; it's a living statement.

"We believe that exceptional living goes beyond aesthetics. That's why our developments deliver personalized service and attention to every detail, ensuring a seamless and luxurious experience from the moment of purchase through to post-handover care." - said Mohammed Mana Sultan Aballala, Founder & CEO, Gulf House Real Estate Development

MEET THE VISIONARY BEHIND GULF HOUSE DEVELOPMENT

Eng. Mohammed Mana Sultan Aballala is a distinguished engineer, entrepreneur, and investor with decades of large-scale development experience across the GCC.

- Served as Project Director for real estate and infrastructure developments exceeding \$2 billion USD in Saudi Arabia, including hospitals, roads, bridges, and residential complexes.
- Founder and Chairman of Najran Cement Company (1.7B SAR capital), one of the largest cement producers in the region with 5M+ tons annual output.
- Founder and Chairman of Amak Mining Company, producing gold, silver, copper, and zinc, successfully listed on the Saudi stock exchange (TASI).



A PASSIONATE INVESTOR A MAN OF VISION

A passionate investor in Dubai's real estate market since 2007, Eng. Aballala designed and built the record-breaking AED 280 million villa on Palm Jumeirah—sold as the most expensive villa at the time.

In 2024, he officially launched Gulf House Real Estate Development in Dubai. His first UAE project, Olaia Residences, is a tribute to his unwavering belief in Palm Jumeirah's unique potential and his personal vision of branded, high-end residential living.

